

Volvo Construction Equipment
Building Tomorrow



EW60E

Volvo Excavators 5.55-6.46 t / 12,235-14,240 lb 47.3 kW



Space and comfort to work

The EW60E features an innovative cab design for a comfortable and more productive operator environment. Well-designed ergonomics and a modern LCD display give you perfect control in all operations. Plenty of storage space is available for personal belongings.

Operator convenience

Ample storage space is available for operator comfort and convenience. A phone tray, two power sockets, cup holder and three other large storage areas makes the Volvo cab a more convenient working environment.



Operator visibility

All-round visibility is enhanced by thin pillars, large glazed area and a large wiper blade. The rear view camera secures a better view for perfect and safe control through the 7" color LCD display. This ensures there are no blind spots even in the most confined working areas.



Work in comfort

The comfortable and adjustable seat makes it easier for the operator to work hard all day and feel less tired by the end of it. The cab's air conditioning is efficient and in automatic mode, the temperature remains at a set level. Six adjustable vents allow for optimal airflow in the cab.



Ease of control

Control your machine with minimal effort in order to get more done in less time. The keypad groups all controls on the right hand side and the 7" color LCD screen displays all machine information for access to functions through its easy to use menus. Through the hot keys, the operator can directly access pre-set functions for added convenience. The proportional joystick provides excellent grip, and the roller fits your thumb perfectly for easy and precise control.





LARGER CAB

A comfortable working space results in better operation, increasing production and reducing fatigue. The cab design creates space behind the seat, allowing the operator to move more freely. The new generation Volvo Cab features excellent visibility and reduced noise levels.



BOOSTED PERFORMANCE

Do more in less time with outstanding combined digging efforts, powerful travel force, fluid swing force and optimal lifting capacity. The EW60E has been designed to tackle the most challenging job sites and contracts using the powerful Volvo Tier 4 final engine and adjustable hydraulic flow. Its well-balanced driveline delivers optimum performance whether working on the job site or on the move.

Power for performance

Climb quick, swing smooth, dig hard and load fast with the EW60E. The traction, swing force and lifting capacity gets you results, fast. This versatile and powerful machine can be tailored for any job and is suitable for a wide range of applications.

Powerful Volvo Tier 4 final engine

Give your job site a boost and achieve fast results. Great power and effective cooling ensure optimized performance in any climate. For the ultimate combination of power and performance, the Tier 4 final engine helps to push through challenging conditions.



Smooth operation

Smooth combined operations means you can make very accurate and precise movements. With responsive controls the machine does exactly what the operator intends for less fatigue and fluent movement.



Versatility

Perform on any job site, whether you're working in a confined space or major construction area. The machine's compact design, long arm, optional fixed boom and offset boom, long dozer blade, auxiliary hydraulic and thumb piping makes the machine suitable for a wide range of jobs and applications.



Wheeled performance

A top speed up to 18 mi/h (30km/h) and the four wheel drive allow you to go on and off-road for better mobility. Drive the machine easily between locations and access hard to reach job sites to save time and keep your machine in prime condition.



Profit in your business

The EW60E is designed and built to increase your profitability and keep you working for longer. To reduce your running costs it features excellent service access, convenient maintenance points and Volvo's auto engine shutdown feature. With outstanding fuel efficiency this durable and reliable machine secures your costs and increases your uptime.

Low fuel consumption

The Volvo engine and hydraulics together offer superior fuel efficiency. The standard auto idle feature helps to reduce your fuel consumption even further and increase your profits.



Auto engine shutdown

A unique offering from Volvo, the engine stops automatically after a preselected time, lowering fuel costs and noise. A stopped hour meter reduces maintenance costs and increases the resale value of the machine.



MATRIS and VCADS Pro

By working with your dealer and using Volvo MATRIS software you can analyze operator behavior to improve efficiency, boost productivity and reduce your fuel and maintenance costs. Volvo also offers the VCADS Pro diagnostic system, making it easy to control your machine.



Durability and reliability

The EW60E is designed with the same high quality as all Volvo machines, including robust transmission system and axles, so you can be assured it's durable and reliable on your job site. You can depend on your machine to perform and work hard for peace of mind.





SERVICEABILITY

Keep your machine up and running with a number of features combined to increase machine availability and reduce downtime. Ground level service access, including great access to the main control valve, convenient greasing points, a large tool box in the lower structure and an easy to clean cooling unit all reduce service time and maintenance costs. Check service intervals easily through the in-cab screen, which shows reminders when maintenance is needed.



ATTACHMENTS VERSATILITY

The machine's attachment can be easily changed to save time and costs. Its design, hydraulics, piping and in-cab switches combined with the Volvo attachments range allows the EW60E to take on a variety of tasks. Volvo attachments work in harmony with the machine to deliver maximum productivity.

One machine, many job sites

Volvo offers a wide range of durable attachments that are suitable for any job site, including utilities, building, agriculture, landscaping and forestry. Volvo attachments are an integrated part of the excavator for which they're intended – delivering maximum productivity and versatility.

Quick coupler

Both the mechanical and the hydraulic quick couplers allow a complete range of buckets to be changed quickly and efficiently.



Buckets

A complete range of buckets from general purpose reinforced buckets to ditching buckets, allow the machine to work on many job sites for a wide range of applications. The durable buckets can work in loose gravel, crushed rock, dirt and soil.



Breaker

Volvo's durable hydraulic breakers have been designed for ultimate compatibility with Volvo excavators. The wide range of breaker tools (or bits) has been built to break all kinds of materials and combines excellent performance with low noise and vibration levels.



Thumb

Designed to work with both Volvo direct fit buckets and quick coupler, the Volvo thumb makes many tasks possible, including piling, placing, loading, lifting and carrying.



A compact machine with big potential

BOOSTED PERFORMANCE

Do more in less time with outstanding combined digging efforts, powerful travel force, fluid swing force and optimal lifting capacity.

Smooth operation

Smooth combined operations means you can make very accurate and precise movements.

MATRIS and VCADS Pro

Volvo MATRIS analyses operator behaviour, improving efficiency and productivity. VCADS Pro helps to control your machine.

ATTACHMENTS VERSATILITY

The Volvo attachments range allows the machine to take on a variety of tasks for a wide range of jobs and applications.

Powerful Volvo Tier 4 final engine

For the ultimate combination of power and performance, the engine helps to push through challenging conditions.

Auto engine shutdown

The auto engine shutdown provides lower fuel costs, less noise, much lower maintenance costs and a greater resale value.

ECO mode

Volvo's unique ECO mode improves fuel efficiency without any loss of performance in most operating conditions.



LARGER CAB

A comfortable working space results in better operation, increasing production and reducing fatigue.

Ease of control

The keypad groups all controls on the right hand side and the LCD screen displays all machine information for access to functions.

Operator convenience

Ample storage space in the cab is available for operator comfort and convenience.

SERVICEABILITY

Ground level service access, including great access to the main control valve, convenient greasing points and easy to clean cooling unit reduce service time.

Wheeled performance

A top speed up to 30km/h and the four wheel drive allow you to go on and off-road for better mobility.

CUSTOMER SUPPORT AGREEMENTS

Customer Support Agreements offer preventive maintenance, total repairs and a number of uptime services.



Adding value to your business

Being a Volvo customer means having a complete set of services at your fingertips. Volvo can offer you a long-term partnership, protect your revenue and provide a full range of customer solutions using high quality parts, delivered by passionate people. Volvo is committed to increasing the positive return on your investment and maximising uptime.

Complete Solutions

Volvo has the right solution for you. So why not let us provide all your needs throughout the whole life cycle of your machine? By

listening to your requirements, we can reduce your total cost of ownership and increase your revenue.



Genuine Volvo Parts

Our attention to detail is what makes us stand out. This proven concept acts as a solid investment in your machine's future. Parts are extensively tested and approved because every part is vital for uptime and performance. Only by using Genuine Volvo Parts, can you be sure that your machine retains the renowned Volvo quality.

Service Network

In order to respond to your needs faster, a Volvo expert is on their way to your job site from one of our Volvo facilities. With our extensive infrastructure of technicians, workshops and dealers, Volvo has a comprehensive network to fully support you using local knowledge and global experience.





CUSTOMER SUPPORT AGREEMENTS

The range of Customer Support Agreements offer preventive maintenance, total repairs and a number of uptime services. Volvo uses the latest technology to monitor machine operation and status, giving you advice to increase your profitability. By having a Customer Support Agreement you are in control of your service costs.

Volvo EW60E in detail

Engine

The new engine which provides excellent performance is equipped with a four-cylinder, vertical, electronic controlled high pressure fuel injectors, in-line turbo charger water cooled diesel engine. This engine fully meets the demands of the latest Tier 4f emissions regulations.

Engine	Volvo	D2.6H
Max. power at	r/min (r/s)	2,400 (40)
Net (ISO 9249/SAE J1349)	kW (hp)	45.2 (60.6)
Gross (ISO 14396/SAE J1995)	kW (hp)	47.3 (63.4)
Max. torque	Nm (ft lbf)	222 (163)
at engine speed	r/min (r/s)	1,500 (25)
No. of cylinders		4
Displacement	l (in ³)	2.6 (160)
Bore	mm (in)	87 (3.4)
Stroke	mm (in)	110 (4.3)

Electrical system

Voltage	V	12
Batteries	V	1 x 12
Battery capacity	Ah	100
Alternator	V/Ah	12/90
Start motor	V - kW	12 - 2.5

Undercarriage

Drive train: One single variable axial-piston motor mounted to the two-step, Power Shift gearbox gives power to front and rear axles.
Framework: All-welded robust torsion box frame.
Front axle: Robust excavator axle with automatic or operator controlled front axle oscillation lock.

Oscillation	± °	5
with mudguards	± °	5
Tire	type	12-16.5 12PR
Tractive force (net)	kN (lbf)	29 (6,519)
Travel speed, on road	km/h (mi/h)	20/30 (12/19)
Travel speed, off road	km/h (mi/h)	10 (6.2)
Min. turning radius	m (ft)	5.1 (16.7)
Travel speeds may depend on to local regulations		

Brake system

Service brakes: servo-hydraulically manoeuvred self-adjusting wet multidiscs with two separate brake circuits.
Parking brake: negative wet disc in gear housing, spring applied and pressure released.
Digging brake: service brake with mechanical lock system.
Security system: The 2-circuit travel brakes are supplied with two accumulators in the event of failure in the service brake system.

Swing system

The swing system is feed from the hydraulic system, eliminating the need for any additional maintenance to gear oil replenishing.
Built-in parking brake: Parking brake is built into the hydraulic motor, enabling safer parking on an incline.
Shockless function: Pressure relive valves are fitted into the swing circuit to eliminate shocks for smooth operation when changing direction.

Max. slew speed	r/min	10
Max. slew torque	kNm (ft lbf)	11.6 (8,556)

Cab

Refrigerant of the type R134a is used when this machine is equipped with air conditioning. Contains fluorinated greenhouse gas R134a, Global Warming Potential 1.430 t CO₂-eq

Sound Level

Sound pressure level in cab according to ISO 6396		
L _{PA}	dB	78
External sound level according to ISO 6395 and EU Noise Directive 2000/14/EC		
L _{WA}	dB	97

Hydraulic system

Open-center, negative hydraulic system providing accurate controllability. The following working modes are included in the system:

Parking mode (P): Parking position for optimal safety.

Travel mode (T): Engine speed is controlled by travel pedal stroke and mode selection switch for low fuel consumption and noise. Work equipment are not able to move at this mode for optimal safety.

Working mode (W): Full working flow with adjustable engine rpm for normal working and best speed utilisation.

Main pump (Type: Variable-displacement pump)

Max. flow	l/min (gal/min)	2 x 60 (2 x 15.9)
-----------	-----------------	-------------------

Pilot pump (Type: Gear pump)

Max. flow	l/min (gal/min)	1 x 21.4 (1 x 5.7)
-----------	-----------------	--------------------

Swing + steering pump (Type: Low noise gear pump)

Max. flow	l/min (gal/min)	1 x 38.9 (1 x 10.3)
-----------	-----------------	---------------------

Relief valve setting pressure

Implement	MPa (psi)	23 (3,263)
Travel system	MPa (psi)	23 (3,263)
Slew system	MPa (psi)	19 (2,698)
Pilot system	MPa (psi)	3.1 (454)

Hydraulic Cylinders

Boom		1
Bore x Stroke	ø x mm (ø x in)	110 x 707 (4.3 x 27.8)
Arm		1
Bore x Stroke	ø x mm (ø x in)	90 x 813 (3.5 x 32)
Bucket		1
Bore x Stroke	ø x mm (ø x in)	80 x 660 (3.1 x 26)
Dozer blade		1
Bore x Stroke	ø x mm (ø x in)	105 x 230 (4.1 x 9.1)
Boom swing		1
Bore x Stroke	ø x mm (ø x in)	90 x 570 (3.5 x 22.4)

Service Refill

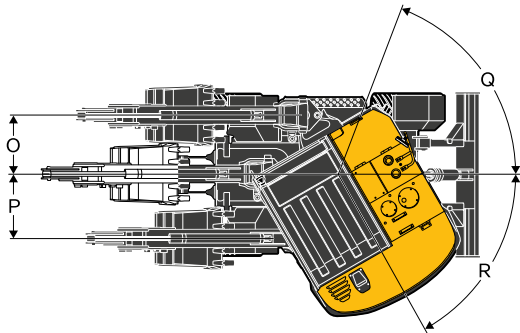
Fuel tank	l (gal)	105 (27.7)
Hydraulic system, total	l (gal)	120 (31.7)
Hydraulic tank	l (gal)	76 (20.1)
Engine oil	l (gal)	11 (2.9)
Engine coolant	l (gal)	10 (2.6)
Transmission	l (gal)	1.7 (0.4)

Total Machine Weights

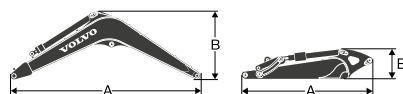
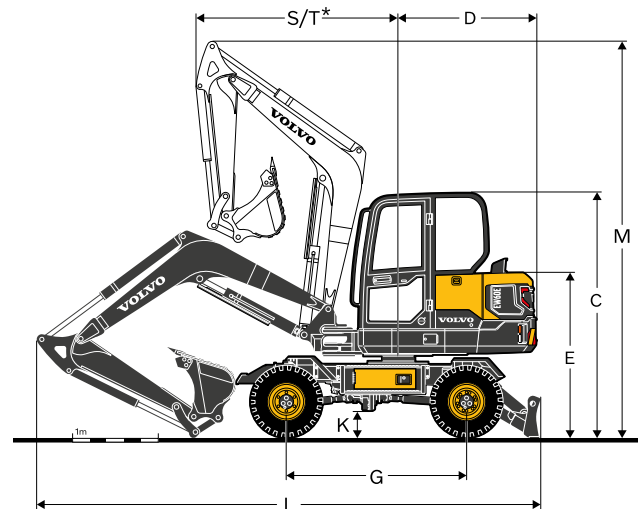
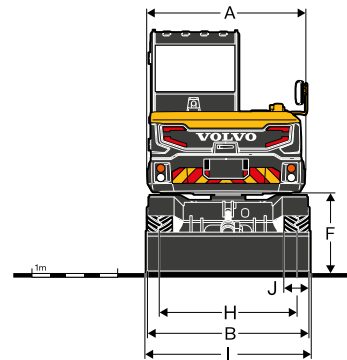
Machine with 2.9m / 9'6" boom, 1.6m / 5'3" arm, 0.142m³ / 37.5gal bucket, standard counterweight, dozer blade, without quick coupler and 75kg operator weight

With dozer blade	kg (lb)	5 920 (13,050)
------------------	---------	----------------

Specifications



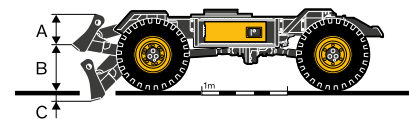
DIMENSIONS		Unit		EW60E			
Boom		m	ft in	2.9	9'6"	2.9	9'6"
Arm		m	ft in	1.6	5'3"	1.9	6'3"
A	Overall width of upper structure	mm	ft in	1,845	6'1"	1,845	6'1"
B	Overall width	mm	ft in	1,930	6'4"	1,930	6'4"
C	Overall height of cab	mm	ft in	2,855	9'4"	2,855	9'4"
D	Tail swing radius	mm	ft in	1,650	5'5"	1,650	5'5"
E	Overall height of engine hood	mm	ft in	1,901	6'3"	1,901	6'3"
F	Counterweight clearance	mm	ft in	960	3'2"	960	3'2"
G	Wheel base	mm	ft in	2,100	6'11"	2,100	6'11"
H	Tread width	mm	ft in	1,595	5'3"	1,595	5'3"
I	Dozerblade width	mm	ft in	1,930	6'4"	1,930	6'4"
J	Tire width	mm	ft in	305	1'0"	305	1'0"
K	Min. ground clearance	mm	ft in	295	1'0"	295	1'0"
L	Overall length	mm	ft in	5,869	19'3"	5,895	19'4"
M	Overall height of boom raise	mm	ft in	4,599	15'1"	4,600	15'1"
S	Front swing radius	mm	ft in	2,352	7'9"	2,368	7'9"
T*	Front swing radius(Max. offset)	mm	ft in	1,386	4'7"	1,395	4'7"
O	Boom swing distance	mm	ft in	756	2'6"	756	2'6"
P	Boom swing distance	mm	ft in	863	2'10"	863	2'10"
Q	Boom swing angle	°		80			
R	Boom swing angle	°		50			



DIMENSIONS		Unit		Boom		Arm			
		m	ft in	2.9	9'6"	1.6	5'3"	1.9	6'3"
A	Length	mm	ft in	3,008	9'10"	2,102	6'11"	2,402	7'11"
B	Height	mm	ft in	1,169	3'10"	488	1'7"	497	1'8"
Width		mm	ft in	336	1'1"	300	1'0"	300	1'0"
Weight		kg	lb	352	780	206	450	181	400

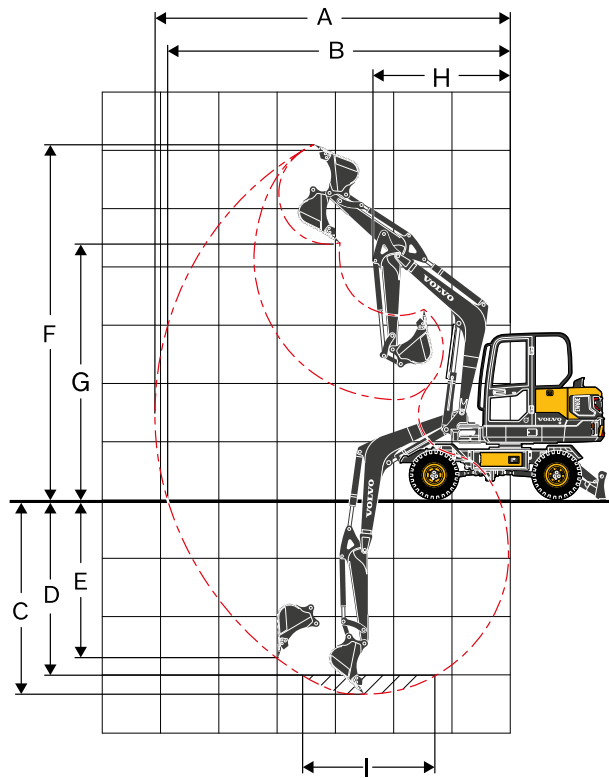
Boom * Includes cylinder, piping and pin, excludes boom cyl. Pin

Arm * Includes cylinder, linkage and pin



DIMENSIONS		Unit		Dozer blade	
A	Height	mm	ft in	465	1'6"
Width		mm	ft in	1,930	6'4"
B	Lifting height	mm	ft in	440	1'5"
C	Digging depth	mm	ft in	140	0'6"

Specifications



WORKING RANGES

Description		Unit					
Boom		m	ft in	2.9	9'6"	2.9	9'6"
Arm		m	ft in	1.6	5'3"	1.9	6'3"
A	Max. digging reach	mm	ft in	6,024	19'9"	6,313	20'9"
B	Max. digging reach on ground	mm	ft in	5,810	19'1"	6,111	20'1"
C	Max. digging depth	mm	ft in	3,292	10'10"	3,592	11'9"
D	Max. digging depth (I=2.44m/8'0" level)	mm	ft in	2,905	9'6"	3,188	10'6"
E	Max. vertical wall digging depth	mm	ft in	2,368	7'9"	2,642	8'8"
F	Max. cutting height	mm	ft in	6,007	19'8"	6,210	20'4"
G	Max. dumping height	mm	ft in	4,443	14'7"	4,647	15'3"
H	Min. front swing radius	mm	ft in	2,350	7'9"	2,367	7'9"

DIGGING FORCES WITH DIRECT FIT BUCKET

Breakout force (bucket)	SAE J1179	kN	lbf	37.7	8,475	37.7	8,475
	ISO 6015	kN	lbf	43.3	9,734	43.3	9,734
Tearout force (arm)	SAE J1179	kN	lbf	28.2	6,340	25.0	5,620
	ISO 6015	kN	lbf	28.8	6,474	25.4	5,710
Rotation angle, bucket		°		196			

LIFTING CAPACITY EW60E

Lifting capacity at the arm end without bucket.

For lifting capacity including bucket. Simply subtract actual weight of the direct fit bucket or the bucket with quick coupler from the following values.

	Lifting hook related to ground level		1.0 m / 3.3 ft		2.0 m / 6.6 ft		3.0 m / 9.0 ft		4.0 m / 13.2 ft		5.0 m / 16.5 ft		Max. reach		
			Along UC	Across UC	Along UC	Across UC	Along UC	Across UC	Along UC	Across UC	Along UC	Across UC	Along UC	Across UC	Max.
Boom: 2.9 m / 9'6" Arm: 1.6 m / 5'3" GP Shoe: Wheel CWT: 350 kg / 772 lb Machine: Front direction Dozer blade: Down	5.0 m	kg											*1,538	1,492	3.4 m
	16.5 ft	lb											*3,390	3,290	11.2 ft
	4.0 m	kg							*1,524	1,157			*1,270	989	4.4 m
	13.2 ft	lb							*3,360	2,550			*2,800	2,180	14.5 ft
	3.0 m	kg							*1,606	1,139			*1,188	812	4.9 m
	9.9 ft	lb							*3,540	2,510			*2,620	1,790	16.2 ft
	2.0 m	kg					*2,508	1,674	*1,828	1,093	*1,524	780	*1,197	739	5.2 m
	6.6 ft	lb					*5,530	3,690	*4,030	2,410	*3,360	1,720	*2,640	1,630	17 ft
	1.0 m	kg					*3,003	1,569	*2,028	1,048	*1,560	762	*1,279	726	5.2 m
	3.3 ft	lb					*6,620	3,460	*4,470	2,310	*3,440	1,680	*2,820	1,600	17.1 ft
	0.0 m	kg			*2,132	*2,132	*3,021	1,529	*2,059	1,016			*1,465	767	5 m
	0 ft	lb			*4,700	*4,700	*6,660	3,370	*4,540	2,240			*3,230	1,690	16.3 ft
	-1.0 m	kg	*3,007	*3,007	*4,028	2,980	*2,626	1,529	*1,787	1,016			*1,420	889	4.5 m
	3.3 ft	lb	*6,630	*6,630	*8,880	6,570	*5,790	3,370	*3,940	2,240			*3,130	1,960	14.6 ft
	-2.0 m	kg			*2,418	*2,418	*1,647	1,574					*1,175	*1,175	3.5 m
	-6.6 ft	lb			*5,330	*5,330	*3,630	3,470					*2,590	*2,590	11.5 ft
Boom: 2.9 m / 9'6" Arm: 1.6 m / 5'3" GP Shoe: Wheel CWT: 350 kg / 772 lb Machine: Front direction Dozer blade: Up	5.0 m	kg											*1,538	1,406	3.4 m
	16.5 ft	lb											*3,390	3,100	11.2 ft
	4.0 m	kg							*1,524	1,093			*1,270	934	4.4 m
	13.2 ft	lb							*3,360	2,410			*2,800	2,060	14.5 ft
	3.0 m	kg							*1,606	1,070			*1,188	767	4.9 m
	9.9 ft	lb							*3,540	2,360			*2,620	1,690	16.2 ft
	2.0 m	kg					*2,508	1,569	*1,828	1,030	1,343	730	*1,197	694	5.2 m
	6.6 ft	lb					*5,530	3,460	*4,030	2,270	2,960	1,610	*2,640	1,530	17 ft
	1.0 m	kg					2,994	1,470	1,860	980	1,320	712	1,256	680	5.2 m
	3.3 ft	lb					6,600	3,240	4,100	2,160	2,910	1,570	2,770	1,500	17.1 ft
	0.0 m	kg			*2,132	*2,132	2,939	1,424	1,828	953			1,334	717	5 m
	0 ft	lb			*4,700	*4,700	6,480	3,140	4,030	2,100			2,940	1,580	16.3 ft
	-1.0 m	kg	*3,007	*3,007	*4,028	2,740	*2,626	1,424	*1,787	953			*1,420	835	4.5 m
	3.3 ft	lb	*6,630	*6,630	*8,880	6,040	*5,790	3,140	*3,940	2,100			*3,130	1,840	14.6 ft
	-2.0 m	kg			*2,418	*2,418	*1,647	1,470					*1,175	*1,175	3.5 m
	-6.6 ft	lb			*5,330	*5,330	*3,630	3,240					*2,590	*2,590	11.5 ft
Boom: 2.9 m / 9'6" Arm: 1.6 m / 5'3" GP Shoe: Wheel CWT: 350 kg / 772 lb Machine: Rear direction Dozer blade: Down	5.0 m	kg											*1,538	1,492	3.4 m
	16.5 ft	lb											*3,390	3,290	11.2 ft
	4.0 m	kg							*1,524	1,157			*1,270	989	4.4 m
	13.2 ft	lb							*3,360	2,550			*2,800	2,180	14.5 ft
	3.0 m	kg							*1,606	1,139			*1,188	812	4.9 m
	9.9 ft	lb							*3,540	2,510			*2,620	1,790	16.2 ft
	2.0 m	kg					*2,508	1,674	*1,828	1,093	*1,524	780	*1,197	739	5.2 m
	6.6 ft	lb					*5,530	3,690	*4,030	2,410	*3,360	1,720	*2,640	1,630	17 ft
	1.0 m	kg					*3,003	1,569	*2,028	1,048	*1,560	762	*1,279	726	5.2 m
	3.3 ft	lb					*6,620	3,460	*4,470	2,310	*3,440	1,680	*2,820	1,600	17.1 ft
	0.0 m	kg			*2,132	*2,132	*3,021	1,529	*2,059	1,016			*1,465	767	5 m
	0 ft	lb			*4,700	*4,700	*6,660	3,370	*4,540	2,240			*3,230	1,690	16.3 ft
	-1.0 m	kg	*3,007	*3,007	*4,028	2,980	*2,626	1,529	*1,787	1,016			*1,420	889	4.5 m
	3.3 ft	lb	*6,630	*6,630	*8,880	6,570	*5,790	3,370	*3,940	2,240			*3,130	1,960	14.6 ft
	-2.0 m	kg			*2,418	*2,418	*1,647	1,574					*1,175	*1,175	3.5 m
	-6.6 ft	lb			*5,330	*5,330	*3,630	3,470					*2,590	*2,590	11.5 ft
Boom: 2.9 m / 9'6" Arm: 1.6 m / 5'3" GP Shoe: Wheel CWT: 350 kg / 772 lb Machine: Rear direction Dozer blade: Up	5.0 m	kg											1,402	1,406	3.4 m
	16.5 ft	lb											3,090	3,100	11.2 ft
	4.0 m	kg							1,093	1,093			934	934	4.4 m
	13.2 ft	lb							2,410	2,410			2,060	2,060	14.5 ft
	3.0 m	kg							1,070	1,070			767	767	4.9 m
	9.9 ft	lb							2,360	2,360			1,690	1,690	16.2 ft
	2.0 m	kg					1,565	1,569	1,030	1,030	735	730	699	694	5.2 m
	6.6 ft	lb					3,450	3,460	2,270	2,270	1,620	1,610	1,540	1,530	17 ft
	1.0 m	kg					1,465	1,470	980	980	717	712	680	680	5.2 m
	3.3 ft	lb					3,230	3,240	2,160	2,160	1,580	1,570	1,500	1,500	17.1 ft
	0.0 m	kg			*2,132	*2,132	1,420	1,424	953	953			717	717	5 m
	0 ft	lb			*4,700	*4,700	3,130	3,140	2,100	2,100			1,580	1,580	16.3 ft
	-1.0 m	kg	*3,007	*3,007	2,712	2,740	1,424	1,424	953	953			835	835	4.5 m
	3.3 ft	lb	*6,630	*6,630	5,980	6,040	3,140	3,140	2,100	2,100			1,840	1,840	14.6 ft
	-2.0 m	kg			*2,418	*2,418	1,465	1,470					*1,175	*1,175	3.5 m
	-6.6 ft	lb			*5,330	*5,330	3,230	3,240					*2,590	*2,590	11.5 ft

Notes: 1. The above loads are in compliance with SAE J1097 and ISO 10567 Hydraulic Excavator Lifting Capacity Standards. 2. Rated loads do not exceed 87% of hydraulic lifting capacity or 75% of tipping load. 3. Rated loads marked with an asterisk (*) are limited by hydraulic capacity rather than tipping load.

Specifications

LIFTING CAPACITY EW60E

Lifting capacity at the arm end without bucket.

For lifting capacity including bucket. Simply subtract actual weight of the direct fit bucket or the bucket with quick coupler from the following values.

	Lifting hook related to ground level		1.0 m / 3.3 ft		2.0 m / 6.6 ft		3.0 m / 9.0 ft		4.0 m / 13.2 ft		5.0 m / 16.5 ft		Max. reach		
			Along UC	Across UC	Along UC	Across UC	Along UC	Across UC	Along UC	Across UC	Along UC	Across UC	Along UC	Across UC	Max.
Boom: 2.9 m / 9'6" Arm: 1.9 m / 6'3" Shoe: Wheel CWT: 350 kg / 772 lb Machine: Front direction Dozer blade: Down	5.0 m	kg											*1,211	*1,211	3.9 m
	16.5 ft	lb											*2,670	*2,670	12.7 ft
	4.0 m	kg							*1,356	1,170			*1,034	875	4.8 m
	13.2 ft	lb							*2,990	2,580			*2,280	1,930	15.6 ft
	3.0 m	kg							*1,465	1,143	*1,379	794	*975	735	5.2 m
	9.9 ft	lb							*3,230	2,520	*3,040	1,750	*2,150	1,620	17.2 ft
	2.0 m	kg					*2,273	1,696	*1,710	1,093	*1,451	776	*984	671	5.5 m
	6.6 ft	lb					*5,010	3,740	*3,770	2,410	*3,200	1,710	*2,170	1,480	18 ft
	1.0 m	kg					*2,871	1,574	*1,955	1,039	*1,529	753	*1,043	658	5.5 m
	3.3 ft	lb					*6,330	3,470	*4,310	2,290	*3,370	1,660	*2,300	1,450	18 ft
	0.0 m	kg	*1,329	*1,329	*2,087	*2,087	*3,030	1,510	*2,050	1,002	*1,506	735	*1,170	689	5.3 m
	0 ft	lb	*2,930	*2,930	*4,600	*4,600	*6,680	3,330	*4,520	2,210	*3,320	1,620	*2,580	1,520	17.3 ft
	-1.0 m	kg	*2,527	*2,527	*3,647	2,917	*2,767	1,497	*1,887	993			*1,343	785	4.8 m
	3.3 ft	lb	*5,570	*5,570	*8,040	6,430	*6,100	3,300	*4,160	2,190			*2,960	1,730	15.8 ft
	-2.0 m	kg	*4,073	*4,073	*3,094	2,985	*2,018	1,529					*1,202	1,043	4 m
	-6.6 ft	lb	*8,980	*8,980	*6,820	6,580	*4,450	3,370					*2,650	2,300	13 ft
Boom: 2.9 m / 9'6" Arm: 1.9 m / 6'3" Shoe: Wheel CWT: 350 kg / 772 lb Machine: Front direction Dozer blade: Up	5.0 m	kg											*1,211	1,152	3.9 m
	16.5 ft	lb											*2,670	2,540	12.7 ft
	4.0 m	kg							*1,356	1,102			*1,034	821	4.8 m
	13.2 ft	lb							*2,990	2,430			*2,280	1,810	15.6 ft
	3.0 m	kg							*1,465	1,080	1,361	748	*975	689	5.2 m
	9.9 ft	lb							*3,230	2,380	3,000	1,650	*2,150	1,520	17.2 ft
	2.0 m	kg					*2,273	1,588	*1,710	1,030	1,338	726	*984	630	5.5 m
	6.6 ft	lb					*5,010	3,500	*3,770	2,270	2,950	1,600	*2,170	1,390	18 ft
	1.0 m	kg					*2,871	1,470	1,855	975	1,311	703	*1,043	617	5.5 m
	3.3 ft	lb					*6,330	3,240	4,090	2,150	2,890	1,550	*2,300	1,360	18 ft
	0.0 m	kg	*1,329	*1,329	*2,087	*2,087	2,921	1,406	1,810	939	1,293	689	*1,170	644	5.3 m
	0 ft	lb	*2,930	*2,930	*4,600	*4,600	6,440	3,100	3,990	2,070	2,850	1,520	*2,580	1,420	17.3 ft
	-1.0 m	kg	*2,527	*2,527	*3,647	2,681	*2,767	1,397	1,801	930			*1,343	735	4.8 m
	3.3 ft	lb	*5,570	*5,570	*8,040	5,910	*6,100	3,080	3,970	2,050			*2,960	1,620	15.8 ft
	-2.0 m	kg	*4,073	*4,073	*3,094	2,744	*2,018	1,424					*1,202	980	4 m
	-6.6 ft	lb	*8,980	*8,980	*6,820	6,050	*4,450	3,140					*2,650	2,160	13 ft
Boom: 2.9 m / 9'6" Arm: 1.9 m / 6'3" Shoe: Wheel CWT: 350 kg / 772 lb Machine: Rear direction Dozer blade: Down	5.0 m	kg											*1,211	*1,211	3.9 m
	16.5 ft	lb											*2,670	*2,670	12.7 ft
	4.0 m	kg							*1,356	1,170			*1,034	875	4.8 m
	13.2 ft	lb							*2,990	2,580			*2,280	1,930	15.6 ft
	3.0 m	kg							*1,465	1,143	*1,379	794	*975	735	5.2 m
	9.9 ft	lb							*3,230	2,520	*3,040	1,750	*2,150	1,620	17.2 ft
	2.0 m	kg					*2,273	1,696	*1,710	1,093	*1,451	776	*984	671	5.5 m
	6.6 ft	lb					*5,010	3,740	*3,770	2,410	*3,200	1,710	*2,170	1,480	18 ft
	1.0 m	kg					*2,871	1,574	*1,955	1,039	*1,529	753	*1,043	658	5.5 m
	3.3 ft	lb					*6,330	3,470	*4,310	2,290	*3,370	1,660	*2,300	1,450	18 ft
	0.0 m	kg	*1,329	*1,329	*2,087	*2,087	*3,030	1,510	*2,050	1,002	*1,506	735	*1,170	689	5.3 m
	0 ft	lb	*2,930	*2,930	*4,600	*4,600	*6,680	3,330	*4,520	2,210	*3,320	1,620	*2,580	1,520	17.3 ft
	-1.0 m	kg	*2,527	*2,527	*3,647	2,917	*2,767	1,497	*1,887	993			*1,343	785	4.8 m
	3.3 ft	lb	*5,570	*5,570	*8,040	6,430	*6,100	3,300	*4,160	2,190			*2,960	1,730	15.8 ft
	-2.0 m	kg	*4,073	*4,073	*3,094	2,985	*2,018	1,529					*1,202	1,043	4 m
	-6.6 ft	lb	*8,980	*8,980	*6,820	6,580	*4,450	3,370					*2,650	2,300	13 ft
Boom: 2.9 m / 9'6" Arm: 1.9 m / 6'3" Shoe: Wheel CWT: 350 kg / 772 lb Machine: Rear direction Dozer blade: Up	5.0 m	kg											*1,211	1,152	3.9 m
	16.5 ft	lb											*2,670	2,540	12.7 ft
	4.0 m	kg							*1,356	1,102			*1,034	821	4.8 m
	13.2 ft	lb							*2,990	2,430			*2,280	1,810	15.6 ft
	3.0 m	kg							*1,465	1,080	1,361	748	*975	689	5.2 m
	9.9 ft	lb							*3,230	2,380	3,000	1,650	*2,150	1,520	17.2 ft
	2.0 m	kg					*2,273	1,588	*1,710	1,030	1,338	726	*984	630	5.5 m
	6.6 ft	lb					*5,010	3,500	*3,770	2,270	2,950	1,600	*2,170	1,390	18 ft
	1.0 m	kg					*2,871	1,470	1,855	975	1,311	703	*1,043	617	5.5 m
	3.3 ft	lb					*6,330	3,240	4,090	2,150	2,890	1,550	*2,300	1,360	18 ft
	0.0 m	kg	*1,329	*1,329	*2,087	*2,087	2,921	1,406	1,810	939	1,293	689	*1,170	644	5.3 m
	0 ft	lb	*2,930	*2,930	*4,600	*4,600	6,440	3,100	3,990	2,070	2,850	1,520	*2,580	1,420	17.3 ft
	-1.0 m	kg	*2,527	*2,527	*3,647	2,681	*2,767	1,397	1,801	930			*1,343	735	4.8 m
	3.3 ft	lb	*5,570	*5,570	*8,040	5,910	*6,100	3,080	3,970	2,050			*2,960	1,620	15.8 ft
	-2.0 m	kg	*4,073	*4,073	*3,094	2,744	*2,018	1,424					*1,202	980	4 m
	-6.6 ft	lb	*8,980	*8,980	*6,820	6,050	*4,450	3,140					*2,650	2,160	13 ft

Notes: 1. The above loads are in compliance with SAE J1097 and ISO 10567 Hydraulic Excavator Lifting Capacity Standards. 2. Rated loads do not exceed 87% of hydraulic lifting capacity or 75% of tipping load. 3. Rated loads marked with an asterisk (*) are limited by hydraulic capacity rather than tipping load.

Equipment

STANDARD EQUIPMENT

Engine

Low-emission Volvo T4f diesel engine
Standard cooling system
Two-stage air filter
Fuel filter and water separator
Alternator, 90 A

Electric / Electronic control system

Safe engine start function
Automatic idling system
Engine auto shut down
Halogen working lights;
Cab-mounted 1 (Front), Boom-mounted 1(LH)
Battery, 12 V / 100 Ah
Start motor, 12 V / 2.5 kW
Monitor and keypad
Master electrical disconnect switch
Electric dozer blade switch on joystick
Pattern change valve
Travel alarm

Frame

Rearview mirror
350 kg (772 lb) counterweight
Under cover
Dozer blade

Undercarriage

Tyre: 12.00-16.5 12PR

Hydraulic system

Automatic two speed travel motors
Cylinder cushioning
Hydraulic fluid mineral 46
Travel motor 30km/h (18.6mi/h)

Cab and interior

Cab
Fabric operator seat with suspension
Seat belt, 3 inch retractable
Climate control with Air conditioning
Control joystick
Master key

Digging equipment

Boom: 2.9m (9'6"), Arm: 1.6m (5'3")
Offset boom
Linkage

Service

Tool kit-daily maintenance

OPTIONAL EQUIPMENT

Engine

Water separator (With heater)

Electric / Electronic control system

Fuel filler pump: 35 l/min (9.3gal/min), with automatic shut-off
Halogen extra working lights;
Cab-mounted 1 (Rear)
Boom-mounted 1(RH)
Caretrack
Rotating warning beacon
Rearview Camera
LED Light

Hydraulic system

Hydraulic piping:
Breaker (X1 Single Acting)
Breaker & shear (X1 Double Acting)
Slope & rotator (X3)
Thumb (with three way valve)
Grapple
Quick coupler
Hose rupture valve for boom, arm
Overload warning device
Hydraulic oil, ISO VG 32, 68
Hydraulic oil, biodegradable 46
Hydraulic oil, longlife oil 32, 46, 68
Travel motor 20 km/h (12.4 mi/h)

Cab and interior

Fabric operator seat with suspension with heater
PVC operator seat with suspension
Seat belt, 2 inch retractable
Radio with MP3/AUX/Bluetooth
Mechanical hour meter
Cab mounted FOG (Falling Object Guard)
FOPS (Falling Object Protection Structure)
Sun screen, front/roof

Digging equipment

Fixed boom
Long arm: 1.9 m (6'3")

Service

Tool kit, full scale
Spare parts

SELECTION OF VOLVO OPTIONAL EQUIPMENT

Electric dozer blade switch on joystick



Rear view camera



Auxiliary hydraulic piping (X3)



LED Light



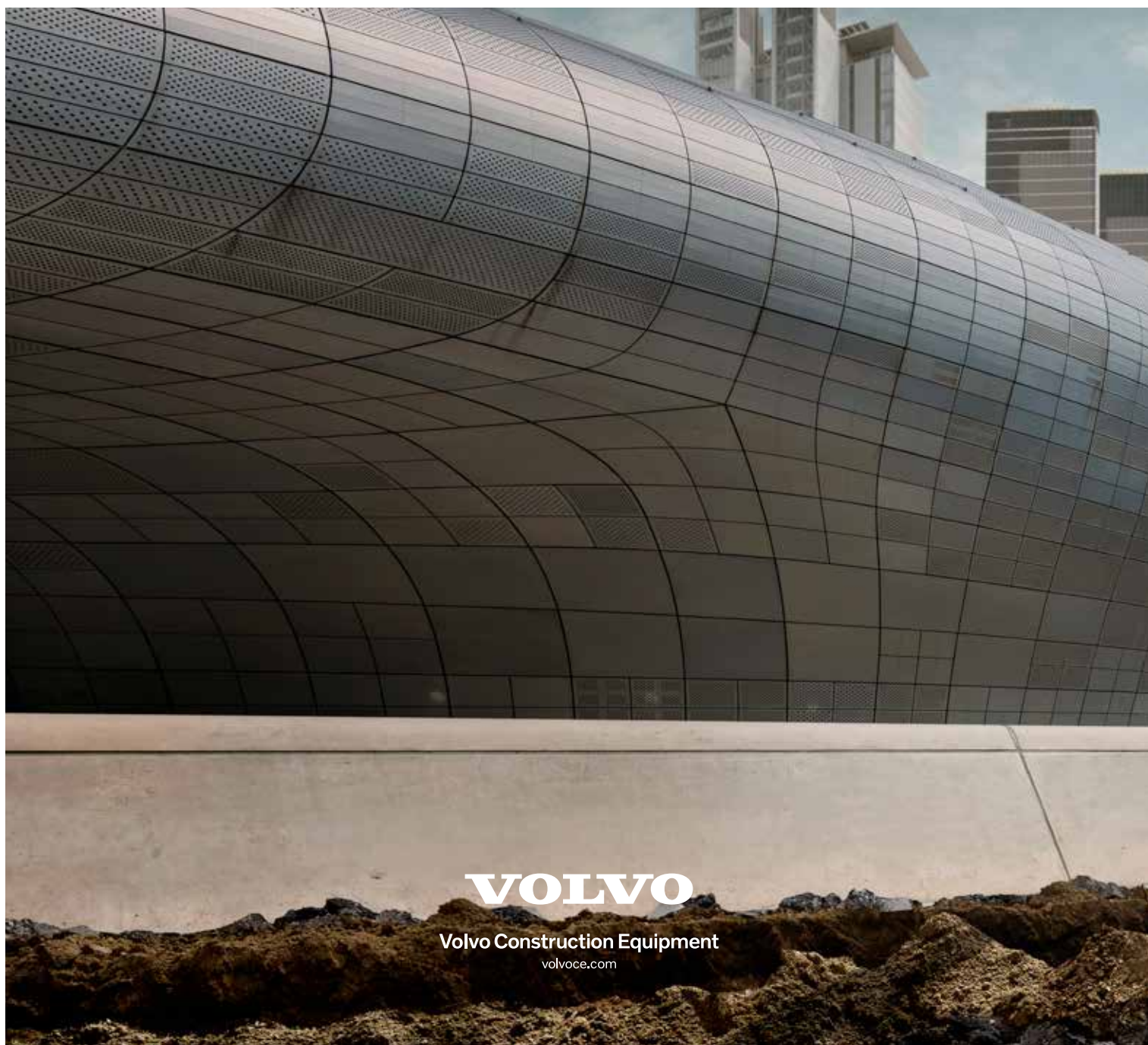
Heated seat



Auto Air Conditioning



Not all products are available in all markets. Under our policy of continuous improvement, we reserve the right to change specifications and design without prior notice. The illustrations do not necessarily show the standard version of the machine.



VOLVO

Volvo Construction Equipment
volvoce.com